

# **Atypical Gunshot Wounds**

**Dr. Mucheleng'anga A. Luchenga.**

Forensic Pathology (University of Toronto), MMED Anatomical Pathology(UNZA), BScHB (UNZA), MBcHB (UNZA).

**Dr Himwaze M Cordelia**

Forensic Pathology (University of Toronto), MMED Anatomical Pathology(UNZA), MD (Ryzan).

# Typical Distant Gunshot Wound



- Distant gunshot wounds have entrances that tend to be round to oval with sharp punched-out margins.
- Typically, the edges are surrounded by an abrasion ring, as shown in the figure.
- The abrasion ring is caused by the bullet scraping and compressing the edges of the skin as it indents and perforates it.
- The abrasion ring is eccentric as the bullet impacted the skin at an angle

# Entrance Wound caused by Ricochet Bullet



The entrance wounds produced by ricochet bullets tend to be larger and more irregular in shape, with irregular areas of abrasion

# Entrance Wound caused by Ricochet Bullet

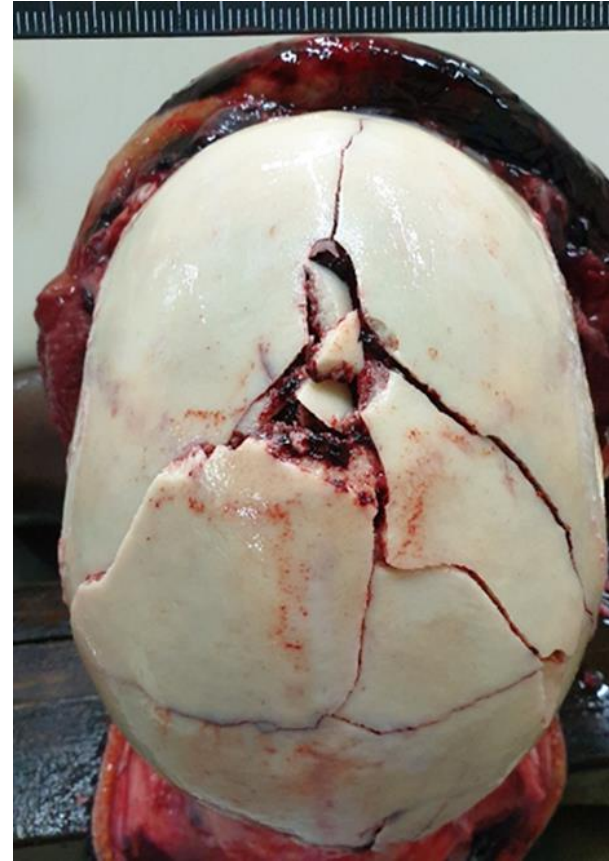


The internal bevelling of the skull proves that the wound is entrance

# Keyhole

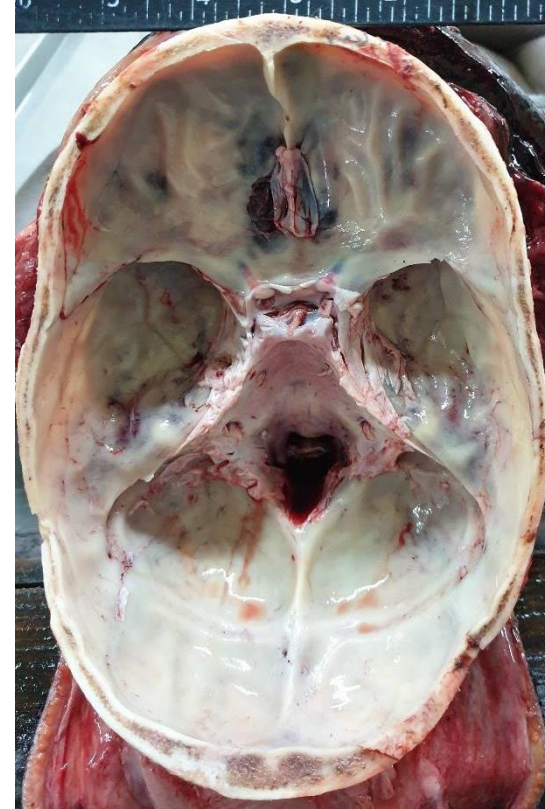
- In a keyhole skull wound, the bullet strikes very shallowly, producing a combined entrance-exit type effect.
- At the point the bullet impacts, there is a punched-out sharp-edge entrance defect.
- The distal end of this hole will have a beveled-out appearance, typically seen in an exit.
- This is usually due to the bullet striking at a very shallow angle and breaking into two pieces, one entering the skull and the other exiting.

# Subscalp hemorrhage and Skull fracture





# Subarachnoid bleeding and Base of skull



# Keyhole

